



بِسْمِ اللَّهِ الرَّحْمَنِ الرَّحِيمِ



المملكة الأردنية الهاشمية

The Hashemite Kingdom of Jordan

PRESS/Aug.2012  
Date.10. Sep.2012

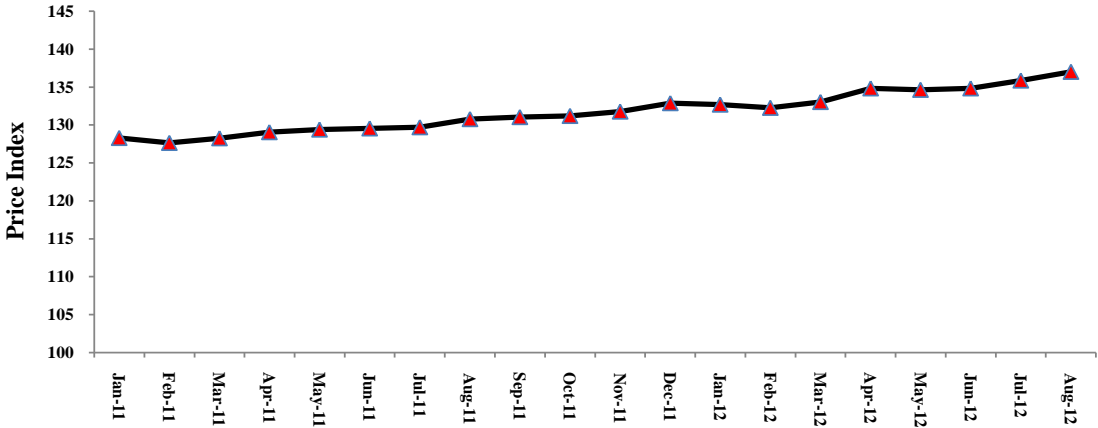
### **4.1% the Inflation Rate for The first eight months of 2012**

The monthly report on inflation in Jordan issued by the Department of Statistics indicates an increase in the Consumer Price Average (inflation) for the first eight months of 2012 by 4.1% as compared with the same period of 2011. The main commodities groups which contributed to this increase were "Transport" by 6.1 %, "Dairy and its Products and eggs" 15.0%, "Rents " 3.8% , " Meat and poultry " 5.6% and "Clothes and Shoes" 5.1% . In contrast, the main commodities groups which have witnessed a decrease in their prices were "cereals and its products" (1.1%) and "fruits" (1.6%).

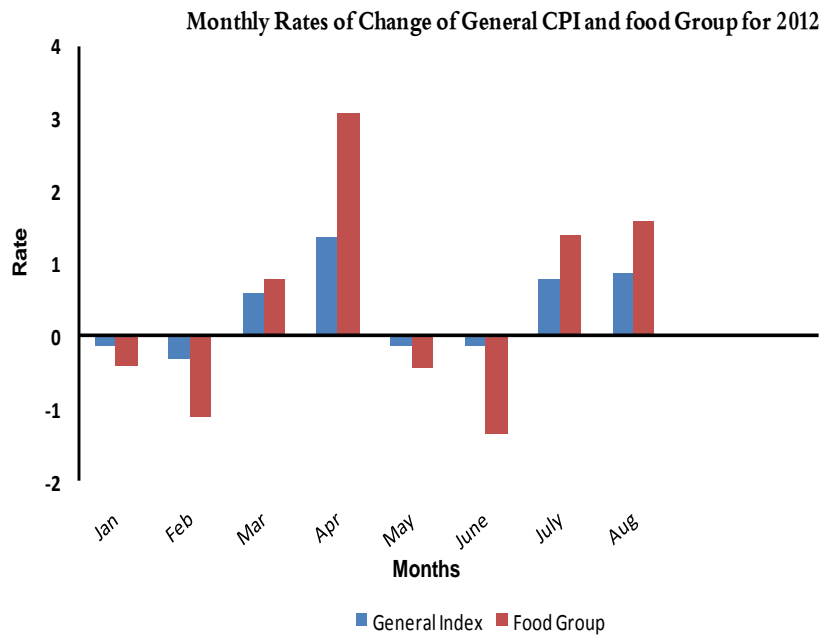
The report also indicates that the Consumer Price Average has increased by 4.8% in August 2012 compared with the same month of 2011. The main commodities groups which contributed to this increase were "Transport" by 10.9%, "vegetables" 32.1% , Dairy and its Products and Eggs " 16.2%, "Rents" 3.2% and " Education" 3.1%. Meanwhile "Cereals and its products" recorded a decrease in their prices by (0.3%).

On the monthly level, the Consumer Price Index has increased in Aug 2012 by 0.9% as compared with the previous month (July 2012 ) .The main commodities groups which contributed to this increase were " vegetables" 18.6% , " Clothes and shoes " 3.8%," Fruits" 3.1%, " personal care" 1.2% and "sugar and its product" 1.3%. Meanwhile the main commodities groups which witnessed a decrease in their prices were "Meat and poultry"(1.5%), "Medical care" (1.3%)," Cereals and its products" (0.4%) and "Oils and fats" (0.8%).

**General Monthly Consumer Price Index for 2011 and the first eight months of 2012**



(100=2006)



**The monthly and accumulative average change of the Consumer Price Index for  
the years 2010, 2011 and 2012**

Month	January	February	March	April	May	June	July	Aug.	Sep.	October	November	December
Year												
2010												
Monthly	0.70	0.72	0.04-	0.42	0.39-	0.25	0.19-	0.68	1.49	1.02	0.10	1.18
2011												
Monthly	0.31-	0.52-	0.48	0.64	0.25	0.13	0.13	0.80	0.24	0.11	0.42	0.86
2011												
accumulative	5.05	4.40	4.36	4.40	4.55	4.64	4.74	4.84	4.77	4.61	4.52	4.41
2012												
monthly	0.15-	-0.33	0.58	1.36	0.14-	0.13	0.78	0.85				
2012												
Accumulative	3.42	3.52	3.59	3.81	3.86	3.90	4.02	4.11				