



PRESS/ 3<sup>rd</sup> Q. 2019  
Date. 2. Dec.2019



المملكة الأردنية الهاشمية

The Hashemite Kingdom of Jordan

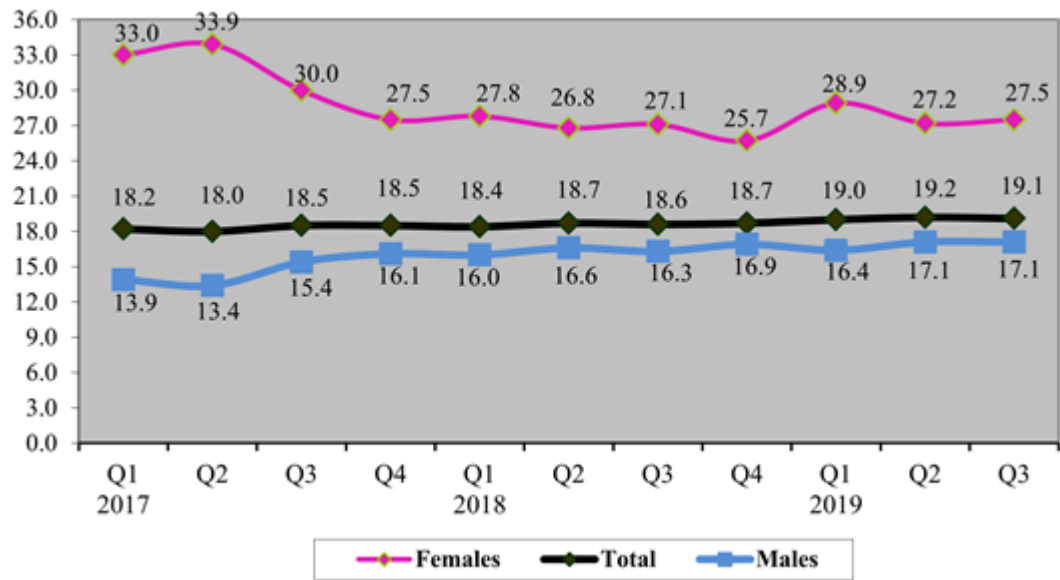
## 19.1% The Unemployment Rate during the third Quarter of 2019

The Department of Statistics issued its quarterly report on the Unemployment Rate during the third quarter of 2019. The following are the main results of this survey:

### **Unemployment:**

- ❖ The results show that the Unemployment Rate has reached (19.1%) during the third quarter of 2019 ; representing an increase by 0.5 percentage points of the third quarter of 2018.
- ❖ the Unemployment Rate for males has reached (17.1% ) during the third quarter of 2019 against (27.5%) for females .It becomes clear that the Unemployment Rate has increased for males by 0.8 percentage points and for females by 0.4 percentage points compared with the third quarter 2018.

Fig 1: Total Unemployment Rates by Sex and Quarters for 2017-third quarter of 2019



### **The Unemployed:**

- ❖ The Survey results show that the Unemployment Rate is high among the university degree holders (Bachelor degree and higher divided by labor force for the same educational level) by 25.2% compared with the other educational levels.
- ❖ The results also show that 55.8% of the Unemployed are secondary certificate holders and higher, and that 44.2% have less than secondary school qualifications.
- ❖ Male Unemployed percentage of bachelor holders and higher was 29.7% against 83.0% for females which is varied according to educational level and sex.
- ❖ The highest rate of Unemployment was recorded in the age group 15-19 and 20-24 years by 49.9% and 38.7% respectively.
- ❖ The highest Rate of Unemployment was recorded in Madaba at 23.9% and the lowest rate was recorded in Karak Governorate at 14.5%.

### **The Employed:**

- ❖ The Employed rate among the age group (15 and above) is 27.2%.
- ❖ The results show that about 59.8% of the employed males and 65.4% of the employed females are concentrated in the age group 20-39 years.
- ❖ About half of the employed have less than secondary qualifications, 8.9% of the secondary level and 39.8% are higher than secondary level.
- ❖ The results also show that about 84.1% of the employed are paid employees (81.9% for males against 94.5% for females).

### **The Labor Force: (Employed & Unemployed):**

- ❖ The results show a clear variation in the labor force distribution with regard to educational level and sex. It was found that about 58.6% of the total male labor force has less than secondary educational qualifications compared to 13.5% for females. The results indicate also that 68.7% of the total labor force among females has bachelor level or higher, compared with 25.3% for males.
- ❖ The Crude Economic Activity Rate (i.e. labor force attributed to the total population) reached 23.1%.
- ❖ The Refined Economic Participation Rate (the labor force attributed to the population 15 years and over) is 33.6% for the whole Kingdom (53.3% for males against 13.2% for females) for the third quarter of 2019 compared with 36.8% for the whole Kingdom (56.9% for males and 15.8 % for females) for the third quarter of 2018.

It should be noted that the Survey included a total sample size of about 16 thousand households distributed all over the governorates of the Kingdom, and is representative of the Urban, Rural, and Regions. It is worthy to mention here that the Employment and Unemployment surveys are carried out at the middle of every quarter and provide data reflecting the situation of the complete quarter (July, Aug, and Sep). The individual is asked whether he/she has searched for a job during the last four weeks before the interview according to the international recommendations applied in Jordan.

Fig 2: Annual Un-Employment Rate for the 3<sup>rd</sup> Quarters of 2007-2019

