



المملكة العربية السعودية
الجمهورية العربية السعودية

2010

/

2011

2010



53440

.2010 1412134 •
%81.6 1152853
.%18.4 259182
2010 %12.5 0.4 •
.2009 %12.9
%10.3 2010 %21.7 %10.4 •
.2009 %24.1
176 %68 •
.2010 %32
%21.1 %10.2 •
.2010 %24.8 %11.5

2010	%9.4	%40.2			•
	%14.7	%63.5			
				.2010	
	%47.1	%23.8	24-15		•
				.2010	
.2010	24-15			%50.1	•
		25			•
	.2010	%14.6		%6.6	
	%3.2	()		•
%30.7	.2010			%9.1	
.2010			%41.9		
	%61.5				•
	.2010		56		
	%62.1				•
		.2010	120		
			%23.3		•
	%13.9	%5.5	(/ / /)		
		.2010		%72	
	%13				•
	.2010	%9.1			
	(%32.2)			•
	.2010	(%19.2)			

الصفحة

1	
2	
4	
5	
7	
81
9	1.1
9	2.1
11	3.1
152
16	2.1
17	2.2
18	3.2
19	4.2
21	5.2
22	6.2
23	7.2
263
274
29	: .5



30	15	1
.....2010-2006	
302010 - 2006	2
30	15	3
.....2010 -2008	
31	15	4
.....2010 -2006	
32	15	5
.....2010 -2006	
33	15	6
.....2010 -2008	
34	15	7
.....2010 -2006	
34	15	8
.....2010 -2008	
34	15	9
.....2010 -2008	
35	15	10
.....2010 -2008	
35	15	11
.....2010 -2008	
36	15	12
.....2010 -2006	



37	15	13
.....2010 -2006	
38	15	14
.....2010 -2007	
38	15	15
.....2010 - 2008	
39	15	16
.....2010 - 2008	
39	15	17
.....2010 - 2008	
40	15	18
.....2010 - 2008	
40	15	19
.....2010 - 2008	
41	15	20
.....2010 - 2008	
41	15	21
.....2010 -2008	



16	15	1
2010 2009	
18	15	2
2010	
19	15	3
2010	
20	15	4
2010	
21	15	5
2010	
22	15	6
2010 -2006	
23	15	7
2010	
24	15	8
2010 2009	
242010 2009	9
252010 2009	10
262010	11
272010 -2006	12
28	15	13
2010	

.1

1.1

2.1

2010

2010

53

.2004

()

. 30

2004

)

)

(

.(

(PDA)

:

$$\left(\frac{\quad}{\quad} \right)$$

15

(

$$\left(\quad \right)$$

:



$$\left(\quad + \quad \right)$$

:



.

:

$$\% 100 \times \frac{15}{\quad} =$$

:



$$\cdot \quad 15$$

$$15$$

:

$$\% 100 \times \frac{15}{15} =$$

15 / :

:

15 : .1

15 : .2

-:

:() _____

()

.(ILO)

: _____

: _____

.....



:

:



:



:



.

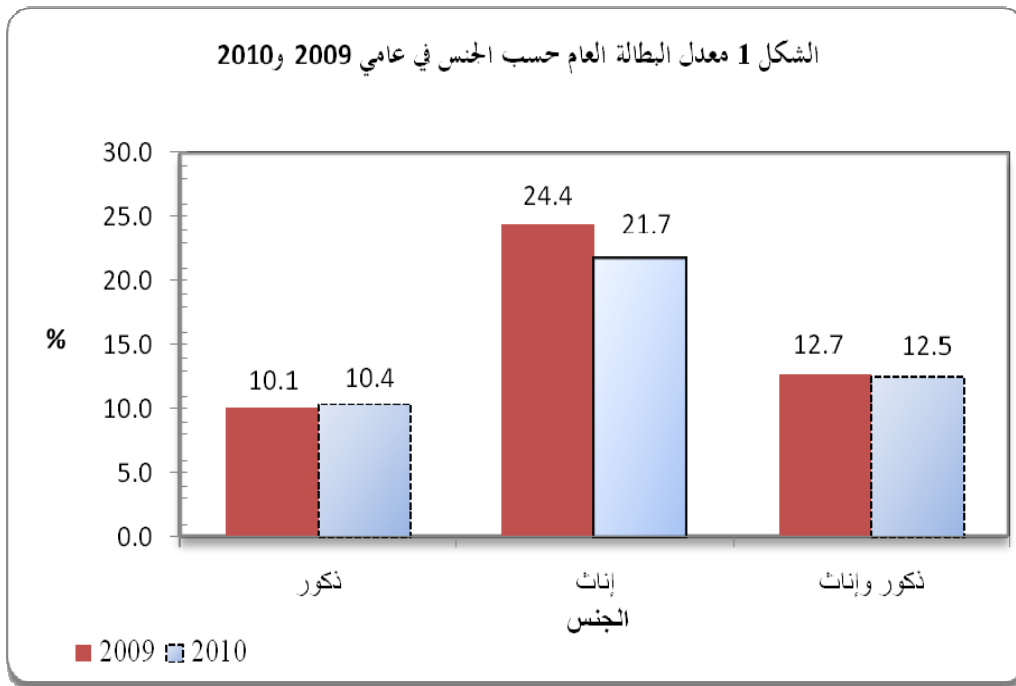
:

⊖



2009 12.5% 0.4 2009 12.9% 2010 2010

2008 6.1% 2009 6.6% 2007 0.9



15

%24.1 %10.3 2010 %21.7 %10.4

%68 .2009

.2010 (%32)

2.2

(24-15)

.

. 25 .

%23.8 24-15

25 %47.1

.2010 %28.1

. %14.6 %6.6

25 24-15

24-15 %50.1

. %48.1 %51

.

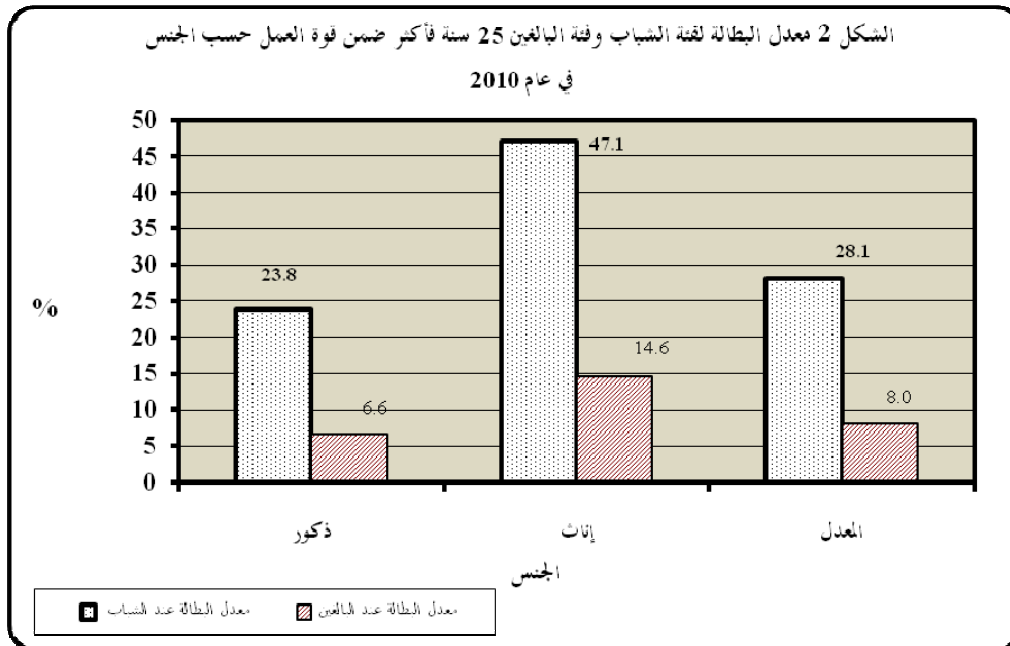
%10.7 40

.2009 %11.6 2010

%15.4 2010 %14.2 40

.2009 %4.3 %3.3 2009

2010 / 17

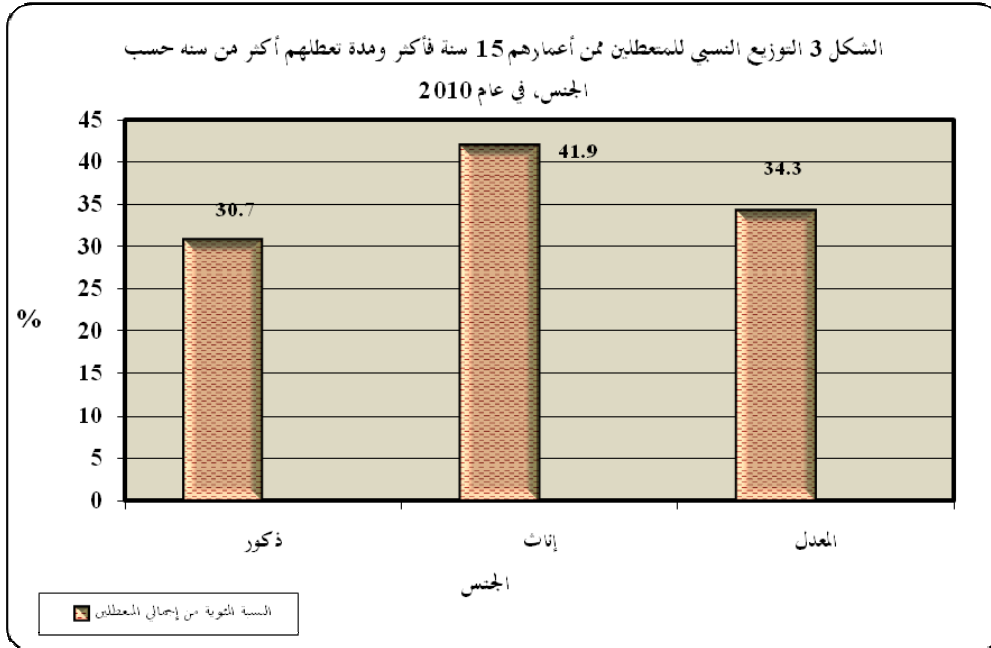


3.2

2009 %34.9 %34.3

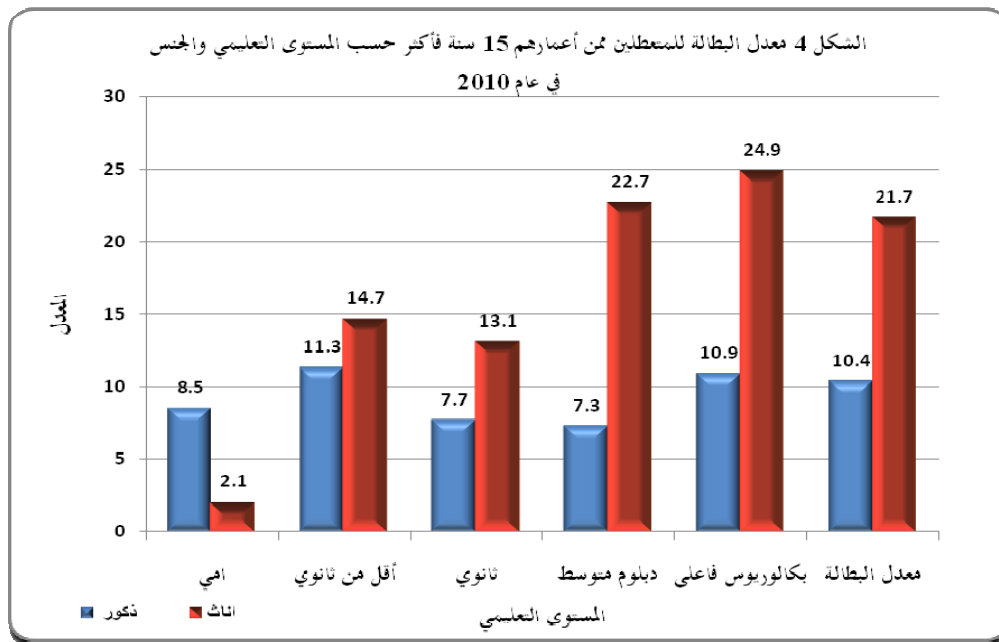
 %41.9 %30.7

.2010



4.2

		%16.1	
			2010
.2009	%16.2	%10.9	%24.9
.2010		%34.1	
		%21.2	
.2009	%19		2010
		%61.5	
			2010
.2009	%53.8	"	"
	%11.5		
	%11.3	2009	%11.9
		2010	
2010	%14.7	2009	2010
			.2009
			%21



% 45.4

%62.1

.2009

%46.1

2010

.2009

%63.0

2010

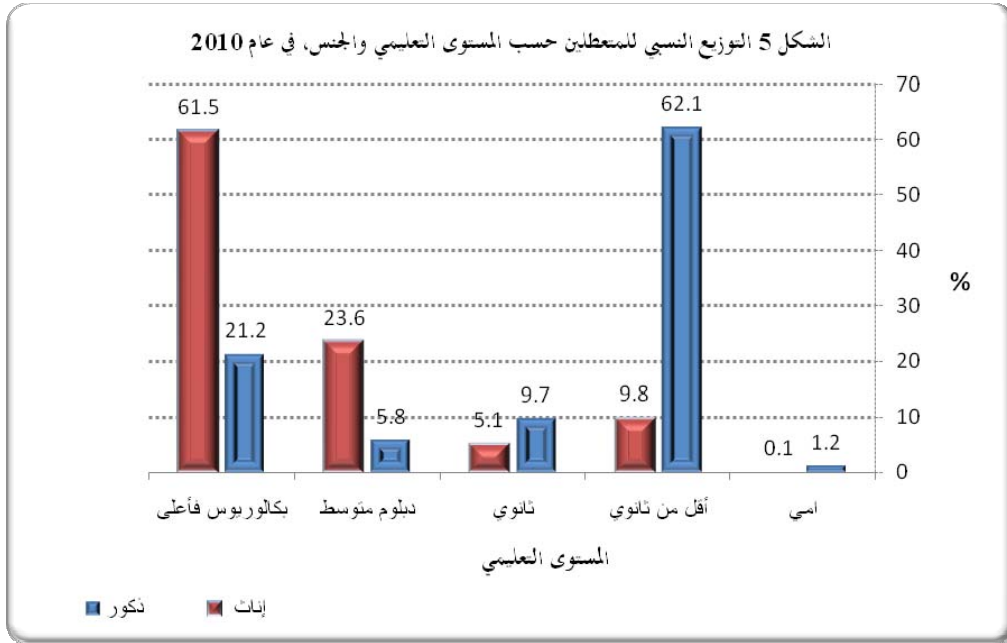
.2009

%13.8

2010

%9.8

%.53.8



5.2

%23.3

%13.9 %5.5 (/ /)

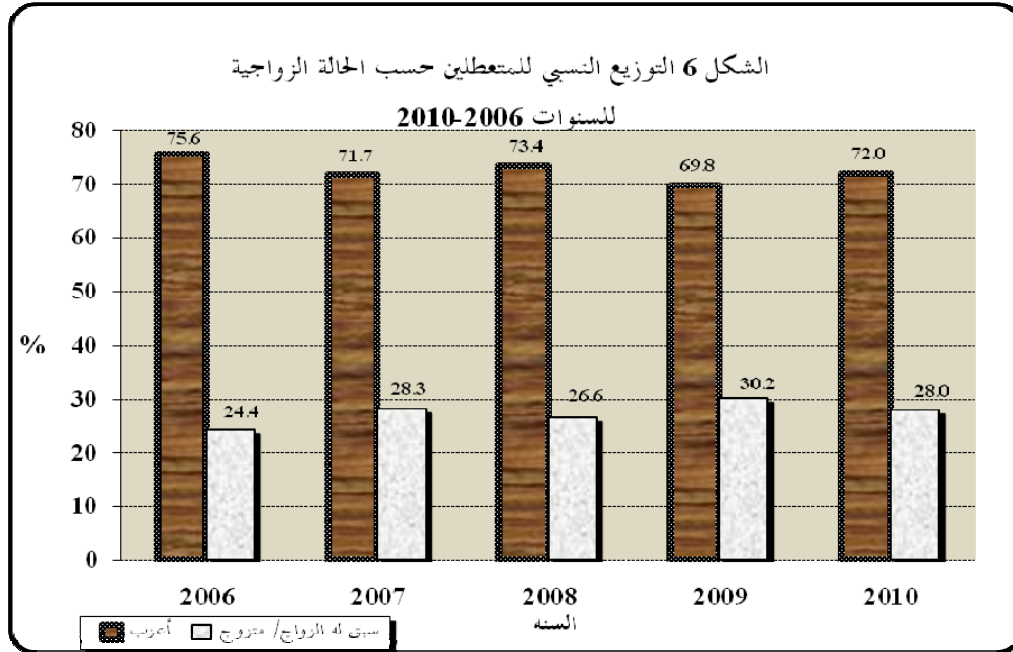
" " " "

.2010

" %12.5 %12.1 %32.4 %16.1 %4.4 %20.6 "

.2010 " " " "

" " " "



%72

%70.7 %72.6 2009 %69.8 2010

%28

%27.4 ،2009 %30.2 2010

.2010 %29.3

6.2

%21.1 %10.2

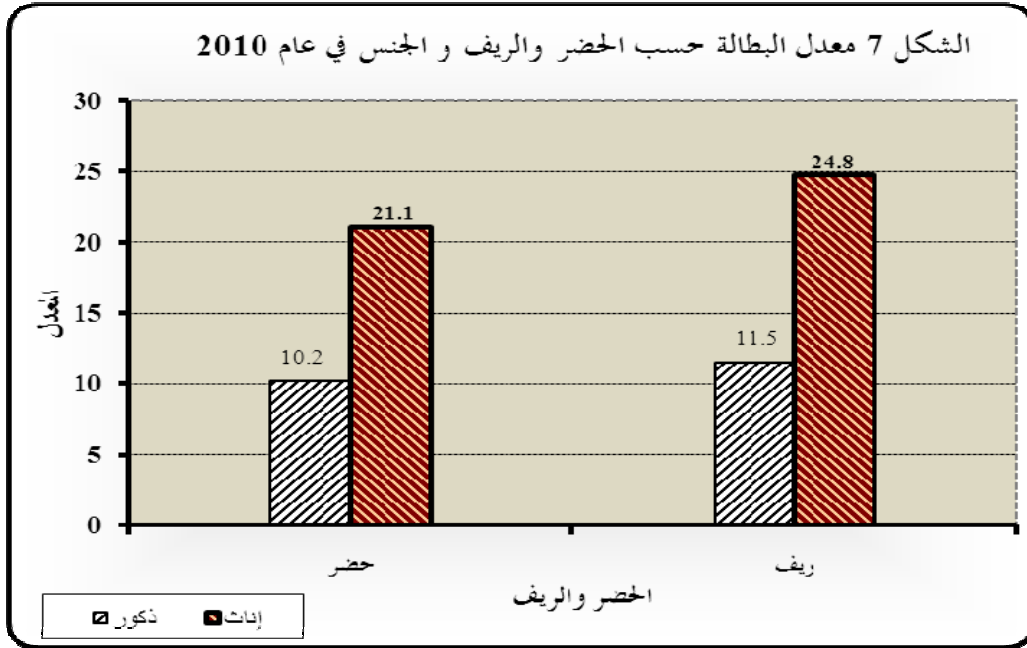
.2009 %23.3 %10.1 2010

%28.1 %11.7 2010 %24.8 %11.5

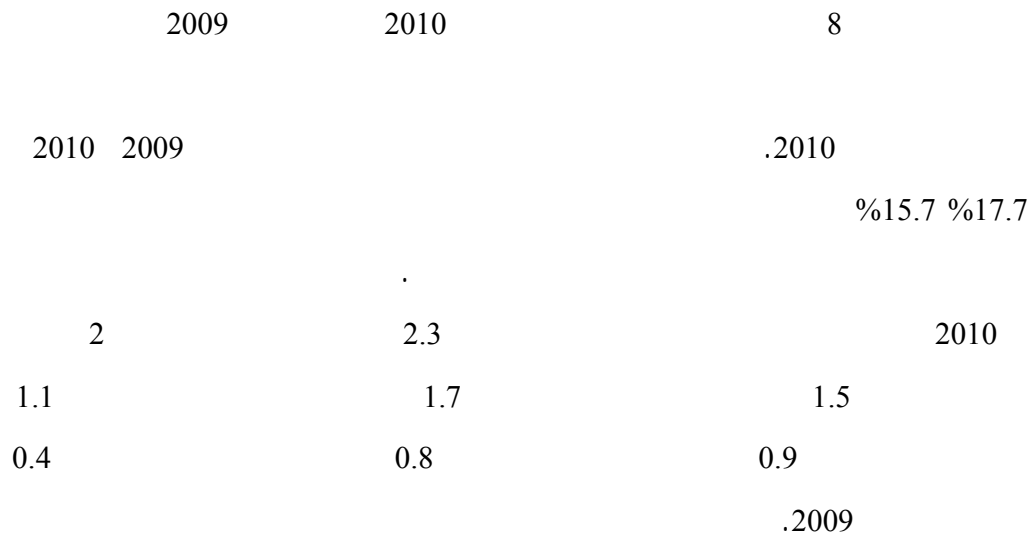
.2010 %18.7 %81.3

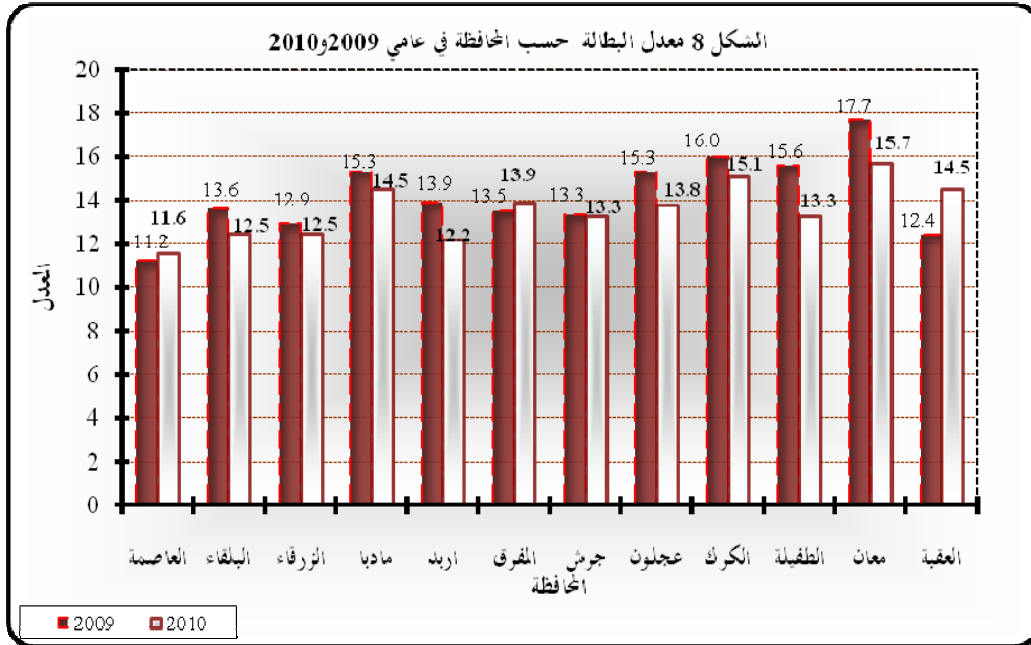
%19.2 %80.8

.2010

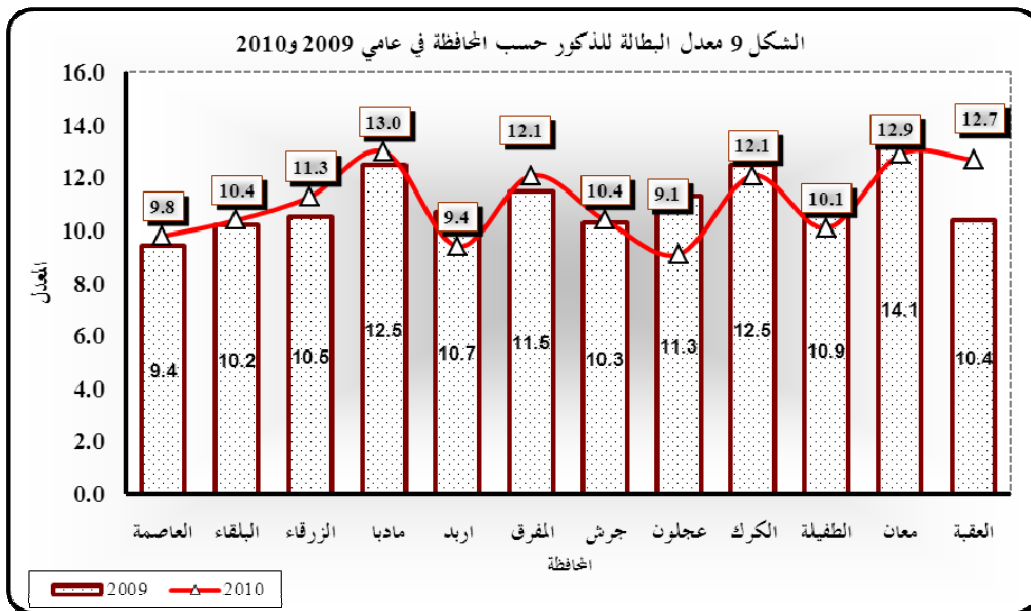


7.2

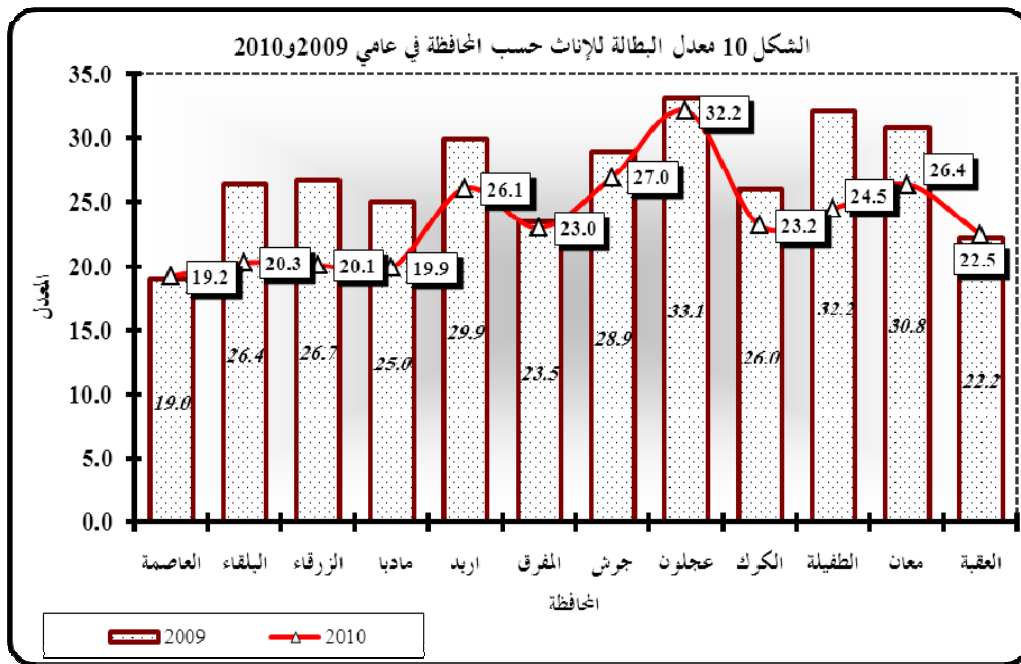




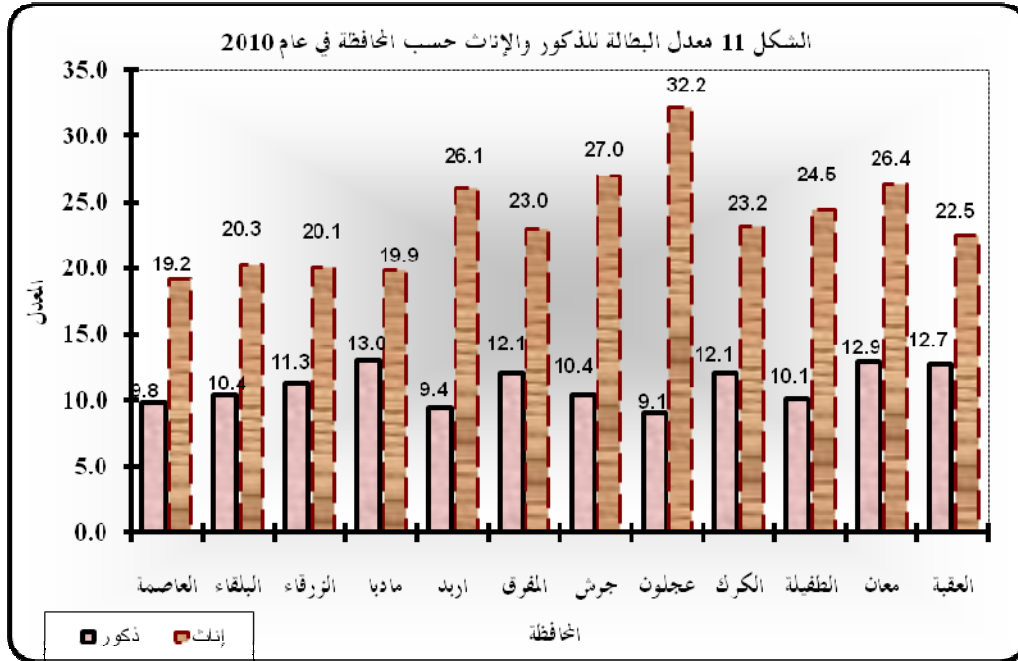
2010 %13
 2010 %12.7 و %12.9 على التوالي
 2009 %9.4
 2010 %10.4 و %14.1
 2009 %10.7
 2010 %9.8 (2009 %9.4)



(%27) .2009 (%33.1) 2010 (%32.2)
 %30.8 2010 %26.4 .2009 (%28.9)
 2010 %19.2 .2009
 .2009 %19



%32.2 11
 %27 . %9.1 2010
 . %12.9 %26.4 2010 %10.4
 .2010 %9.8 (%19.2)
 .2009 %13 %19.9

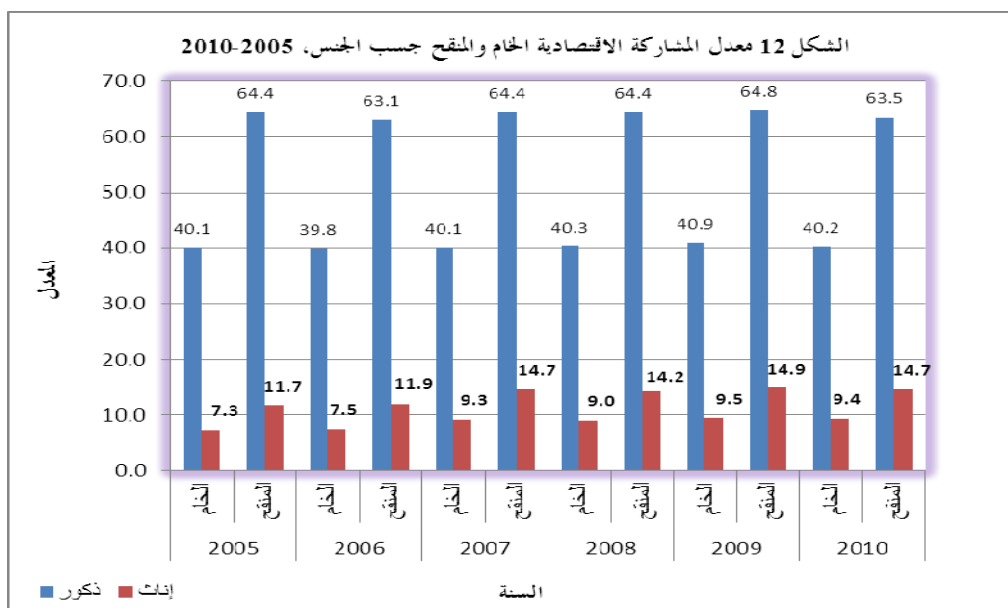


.3

2009 . %25.4 2010 %25.1
 .2010 %9.4 %40.2

15

2010 %14.7 %63.5
 %40.1 2010 %39.5
 %44.8 .2009
 %35.4 2010



.4

15

%49.3

%50.7

3578334

15

1412134

. 2010

%39.5

%81.6

1152853

%.18.4

259182

%87.5

1235948

202933

1033015

2010

%12.5

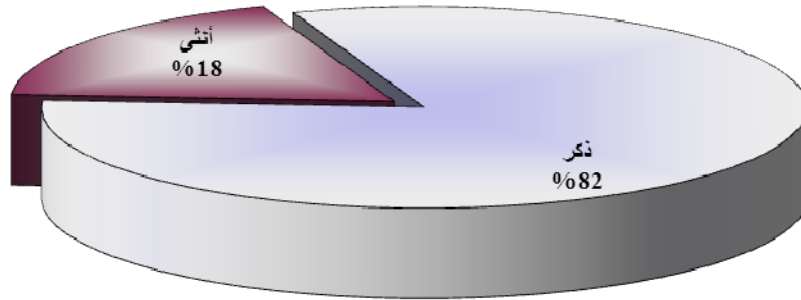
176186

%30.5

2166200

%.69.5

الشكل 13 التوزيع النسبي لقوة العمل الاردنية من أعمارهم 15 سنة فأكثر حسب الجنس، 2010



.5

15

1

2010 -2006

2010	2009	2008	2007	2006	
10.4	10.3	10.1	10.3	11.9	
21.7	24.1	24.4	25.6	25.0	
12.5	12.9	12.7	13.1	14.0	

:

2010 -2006

2

2010	2009	2008	2007	2006	
12.4	12.1	14.1	14.3	14.4	
12.2	13.0	12.5	10.8	13.1	
13.5	14.0	12.0	14.3	15.4	
11.8	12.2	12.0	13.0	13.0	

15

3

2010 -2008

2010			2009			2008			
12.2	21.1	10.2	12.5	23.3	10.1	12.1	23.0	9.7	
13.9	24.8	11.5	14.8	28.1	11.7	15.8	31.4	12.4	
12.5	21.7	10.4	12.9	24.1	10.3	12.7	24.4	10.1	

:

2010 -2006

2010	2009	2008	2007	2006		
32.7	30.9	32.0	34.0	35.4		19-15
38.9	38.1	52.3	44.4	40.4		
33.0	31.2	32.9	34.7	35.6		
20.7	19.5	19.4	20.3	22.1		24-20
47.2	46.4	48.6	48.1	45.8		
26.7	25.7	25.8	26.6	26.8		
7.8	7.5	7.5	7.3	9.1		39-25
18.2	21.2	20.8	22.0	21.2		
10.1	10.5	10.3	10.4	11.3		
5.1	5.5	5.0	4.8	5.0		54-40
3.7	5.7	4.7	7.1	6.5		
4.9	5.5	4.9	5.1	5.2		
3.3	4.8	2.4	3.8	5.4		64-55
3.4	3.0	0.0	3.5	2.9		
3.3	4.6	2.3	3.8	5.3		
2.2	3.1	1.1	1.9	0.7		+65
0.0	0.0	0.0	0.0	0.0		
2.1	3.0	1.0	1.8	0.6		

15

5

2010 -2006

2010	2009	2008	2007	2006	/	
8.6	10.9	7.6	7.3	9.8		
1.2	4.3	4.4	8.3	3.1		
7.6	9.9	7.2	7.8	9.3		
11.3	11.3	11.5	11.7	13.5		
14.8	21.0	23.7	25.9	17.9		
11.5	11.9	12.2	12.5	13.7		
7.7	7.9	8.4	8.9	10.1		
13.0	22.0	20.2	25.1	22.4		
8.4	9.8	9.9	11.1	11.6		
7.3	7.3	6.5	6.3	6.8		
22.7	24.0	22.8	25.8	26.3		
13.1	13.7	12.6	14.0	13.9		
10.9	10.4	9.2	9.6	11.0		
24.9	25.9	26.5	26.1	27.6		
16.1	16.2	15.5	15.4	16.5		

:

2010 -2008

2010			2009			2008			المحافظة
11.6	19.2	9.8	11.2	19.0	9.4	9.7	18.5	7.7	
12.5	20.3	10.4	13.6	26.4	10.2	12.8	21.4	10.6	
12.5	20.1	11.3	12.9	26.7	10.5	11.6	25.4	9.4	
14.5	19.9	13.0	15.3	25.0	12.5	14.6	21.7	12.8	
12.2	26.1	9.4	13.9	29.9	10.7	15.9	32.5	12.6	
13.9	23.0	12.1	13.5	23.5	11.5	13.5	27.9	10.9	
13.3	27.0	10.6	13.3	28.9	10.3	15.6	32.1	12.2	
13.8	32.2	9.1	15.3	33.1	11.3	14.8	29.2	11.0	
15.1	23.2	12.1	16.0	26.0	12.5	18.2	29.7	13.8	
13.3	24.5	10.1	15.6	32.2	10.9	16.6	31.6	12.9	
15.7	26.4	12.9	17.7	30.8	14.1	20.9	30.0	18.5	
14.5	22.5	12.7	12.4	22.2	10.4	15.1	29.1	12.7	
12.5	21.7	10.4	12.9	24.1	10.3	12.7	24.4	10.1	

15

7

2010 -2006

2010	2009	2008	2007	2006	
68.0	65.5	65.8	64.1	72.1	
32.0	34.5	34.2	35.9	27.9	
100.0	100.0	100.0	100.0	100.0	

:

15

8

2010 -2008

2010			2009			2008			
									-
81.2	80.9	81.3	80.9	80.4	81.1	79.5	78.9	79.8	
18.8	19.1	18.7	19.1	19.6	18.9	20.5	21.1	20.2	
100.0	100.0	100.0	100.0	100.0	100.0	100.0	100.0	100.0	

:

15

9

2010 -2008

2010			2009			2008			
72.0	70.7	72.6	69.8	66.9	71.4	73.4	70.7	74.7	
28.0	29.3	27.4	30.2	33.1	28.6	26.6	29.3	25.3	-
100.0	100.0	100.0	100.0	100.0	100.0	100.0	100.0	100.0	

:

15

10

2010 -2008

2010			2009			2008			
58.0	36.9	67.9	57.0	36.7	67.7	54.6	32.2	66.3	
42.0	63.1	32.1	43.0	63.3	32.3	45.4	67.8	33.7	
100.0	100.0	100.0	100.0	100.0	100.0	100.0	100.0	100.0	

15

11

2010 -2008

2010			2009			2008			
36.6	36.3	36.7	34.1	32.4	35.1	30.4	30.4	29.9	
6.6	7.2	6.3	6.7	7.9	6.1	6.5	6.4	6.5	
14.0	9.3	16.2	14.6	13.0	15.4	12.8	11.1	13.5	
3.0	2.8	3.0	3.1	3.2	3.0	2.8	2.5	3.0	
17.4	19.5	16.4	19.3	19.7	19.1	22.7	22.8	23.1	
4.8	4.1	5.2	4.5	3.8	4.8	4.3	4.0	4.5	
2.7	2.8	2.6	2.7	2.8	2.6	3.4	3.4	3.3	
2.3	3.4	1.8	3.0	2.3	2.6	2.7	3.2	2.4	
5.6	7.2	4.9	5.7	6.9	5.0	6.6	8.7	5.5	
1.6	2.1	1.4	1.8	2.4	1.5	2.0	2.2	1.8	
2.6	2.8	2.5	2.7	2.9	2.6	3.4	3.0	3.5	
2.8	2.5	3.0	2.3	2.0	2.5	2.7	2.2	2.9	
100.0	100.0	100.0	100.0	100.0	100.0	100.0	100.0	100.0	

2010 -2006

2010	2009	2008	2007	2006	/	
18.4	19.1	19.5	19.0	18.3		19-15
2.1	2.4	2.5	2.8	2.5		
13.0	13.2	13.9	13.4	14.1		
32.6	31.2	33.0	34.8	34.8		24-20
45.9	43.1	45.0	43.1	46.5		
37.1	35.7	37.2	37.5	38.2		
34.9	34.0	34.7	33.4	34.8		39-25
48.5	50.1	49.0	49.4	46.5		
39.1	39.6	39.5	39.1	38.0		
12.4	12.9	11.5	10.8	9.7		54-40
3.3	4.2	3.5	4.6	4.5		
9.6	9.6	8.7	8.7	8.1		
1.3	2.3	1.1	1.8	2.2		64-55
0.2	0.2	0.0	0.3	0.0		
1.0	1.5	0.7	1.2	1.6		
0.3	0.4	0.1	0.3	0.1		+65
0.0	0.0	0.0	0.0	0.0		
0.1	0.2	0.1	0.1	0.0		

:

2010 -2006

2010	2009	2008	2007	2006	/	
1.2	1.5	1.1	1.1	1.9		
0.1	0.2	0.2	0.5	0.1		
0.8	1.1	0.8	0.9	1.4		
62.1	63.0	64.5	62.5	64.9		
9.8	13.8	13.6	14.8	10.3		
45.4	46.1	47.1	45.4	49.6		
9.7	10.3	11.5	12.6	12.3		
5.1	8.6	7.7	10.1	10.1		
8.2	9.7	10.2	11.7	11.7		
5.8	6.1	5.8	5.4	4.9		
23.6	23.6	23	25.5	28.1		
11.5	12.1	11.7	12.6	11.4		
21.2	19.0	17.1	18.4	16.0		
61.5	53.8	55.5	49.1	51.5		
34.1	31.0	30.2	29.4	25.9		

15

14

2010 -2007

2010	2009	2008	2007	
119838	118122	111916	110413	
56348	62163	58198	61790	
176186	180284	170114	172203	

15

15

2010 - 2008

2010*			2009			2008			
المجموع	إناث	ذكور	المجموع	إناث	ذكور	المجموع	إناث	ذكور	
64450	20479	43971	61536	20113	41423	51487	17984	33503	
11707	4095	7612	12125	4920	7205	11016	3720	7295	
24612	5218	19394	26283	8055	18227	21638	6480	15158	
5219	1568	3651	5531	1988	3543	4851	1467	3384	
30599	11014	19585	34786	12249	22537	38843	13103	25740	
8443	2263	6180	8070	2343	5727	7344	2307	5037	
4698	1542	3156	4796	1719	3077	5689	1986	3702	
4104	1940	2164	4620	1960	2760	4519	1862	2653	
9911	4075	5836	10191	4310	5881	11194	5022	6173	
2899	1193	1706	3301	1510	1790	3306	1249	2057	
4548	1566	2982	4852	1826	3055	5679	1724	3956	
4997	1395	3602	4184	1268	2916	4550	1292	3257	
176186	56348	119838	180284	62163	118122	170114	58198	111916	

15

16

2010 - 2008

2010			2009			2008			
23034	1077	21957	23778	1340	22438	23188	1509	21678	19 - 15
106054	43534	62520	105449	46340	59109	104283	45103	59180	29 - 20
28252	9876	18377	30227	11826	18401	26436	9623	16813	39 - 30
13423	1607	11816	14076	2313	11763	12662	1903	10760	49 - 40
5423	255	5168	6754	62163	6411	3546	61	3485	50
176186	56348	119838	180284	62163	118122	170114	58198	111916	

15

17

2010 - 2008

2010*			2009			2008			
4769	170	4599	5648	333	5314	4534	371	4163	/
1069	0	1069	1435	0	1435	1169	0	1169	
75613	5380	70233	77921	8381	69540	75685	7641	68044	
14482	2864	11618	17520	5357	12163	17432	4507	12925	
20218	13291	6927	21847	14661	7185	19928	13399	6529	
56860	32859	24002	52255	31569	20686	48660	30721	17939	
3175	1784	1391	3659	1862	1797	2706	1560	1146	
176186	56348	119838	180284	62163	118122	170114	58198	111916	

15
2010 - 2008

18

2010			2009			2008			
126771	39818	86952	125920	41591	84329	124790	41139	83650	/
47109	15258	31850	52104	19074	33030	43990	16148	27842	/
1974	1074	900	2005	1264	741	1046	679	367	/
333	197	136	255	233	21	278	232	46	/
0	0	0	0	0	0	11	0	11	/
176186	56348	119838	180284	62163	118122	170114	58198	111916	

/ :

15
2010 - 2008

19

2010			2009			2008			
115841	32746	83095	117404	35943	81461	136968	42725	94243	12-0
35534	12279	23255	37729	13901	23828	23206	10271	12935	24-13
15058	6413	8645	15829	7665	8164	6284	3261	3022	36-25
9753	4911	4843	9324	4655	4669	3656	1941	1715	36
176186	56348	119838	180284	62163	118122	170114	58198	111915	

/ :

15
2010 - 2008

20

2010*			2009			2008			
33029	1168	31861	33489	1241	32248	28118	784	27334	
13976	13932	45	17535	17458	77	15237	15144	93	/
125330	40098	85233	124422	41632	82790	122147	40394	81753	/
79	79	0	0	0	0	36	0	36	/
590	24	566	305	70	236	417	156	261	/
2341	690	1651	3456	1072	2384	3439	1295	2143	/
737	358	379	1078	690	387	707	425	282	
104	0	104	0	0	0	14	0	14	
176186	56348	119838	180284	62163	118122	170114	58198	111916	

/ :

15
2010 - 2008

21

2010			2009			2008			
102104	20790	81314	102772	22842	79930	92914	18730	74184	
74082	35558	38524	77512	39321	38191	77200	39468	37732	
176186	56348	119838	180284	62163	118122	170114	58198	111916	

/ :